

W HOTELS

**ROOMS & SUITES  
MENU**

W PUNTA CANA



## W PUNTA CANA

# PREMIER GUEST ROOM TROPICAL VIEW

Stylish guest rooms with exotic tropical views, fine furnishings, and décor inspired by vibrant Dominican culture. Spacious 700–850 sq ft (63–77 sqm) accommodations with private balcony. Whatever/Whenever service unique to the W brand. Double rooms feature two King-size beds.

**Room Highlights:** Phone with voicemail / Daily Housekeeping / Daily Turndown.

#### Rooms Features:

- 700–850 sq. ft. (63–77 sqm)
- Balcony.
- Air-conditioned.
- Accessible Hotel

#### Beds & Bedding

- One King Bed - Max occupancy: 2 guests.
- Two King beds - Max occupancy: 4 guests.
- Rollaway beds not permitted.
- Cribs not permitted.
- Luxury duvet.

#### Food & Beverages

- 24-hour room service included.
- Complimentary bottled water & soft drinks.
- Coffee/tea maker.
- MIXBAR with mini fridge.

#### Bath & Bathroom

- Separate bathtub & shower.
- Lighted makeup mirror.
- Davines Comfort Zone amenities.

- Hair dryer, robe & slippers.

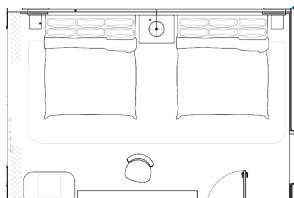
#### Furniture

- Oversized chair.
- Writing desk with outlet.
- In-room safe.
- Alarm clock.
- Iron & ironing board.

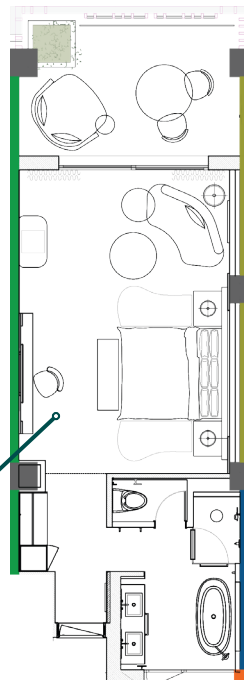
#### Accessibility

- Mobility accessible rooms available.
- Roll-in shower rooms available.
- Hearing accessible rooms with visual alarms & notification devices available.

**Hotel Highlights:** Free WI-FI / 24/7 Gym Studio / 100% smoke-free / Opened in 2025.



Two King Beds



One King Bed



## W PUNTA CANA

# PREMIER GUEST ROOM OCEAN VIEW

Stylish guest rooms with ocean views, fine furnishings, and décor inspired by vibrant Dominican culture.

Spacious 700–850 sq ft (63–77 sqm) accommodations with private balcony. Whatever Whenever service unique to the W brand. Double rooms feature two King-size beds.

### Room Highlights:

- Phone with voicemail.
- Daily Housekeeping.
- Daily Turndown.

### Rooms Features:

- 700–850 sq. ft. (63–77 sqm)
- Balcony.
- Air-conditioned.
- Accessible Hotel.

### Beds & Bedding

- One King Bed – Max occupancy: 2 guests.
- Two King beds – Max occupancy: 4 guests.
- Rollaway beds not permitted.
- Cribs not permitted.
- Luxury duvet.

### Food & Beverages

- 24-hour room service included.
- Complimentary bottled water & soft drinks.
- Coffee/tea maker.
- MIXBAR with mini fridge.

### Bath & Bathroom

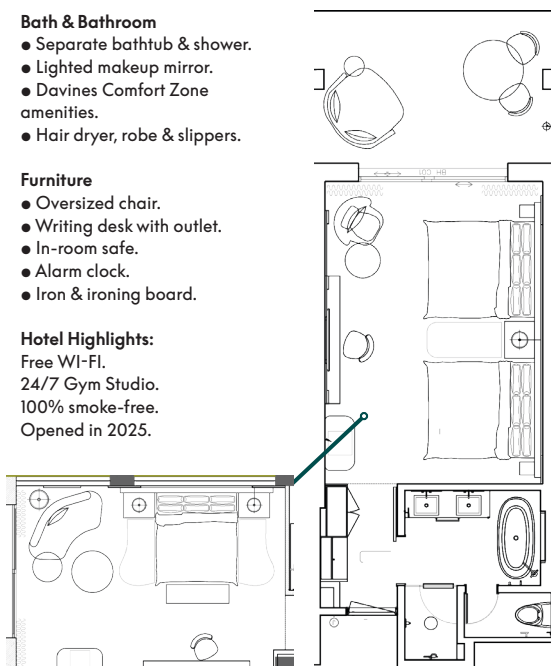
- Separate bathtub & shower.
- Lighted makeup mirror.
- Davines Comfort Zone amenities.
- Hair dryer, robe & slippers.

### Furniture

- Oversized chair.
- Writing desk with outlet.
- In-room safe.
- Alarm clock.
- Iron & ironing board.

### Hotel Highlights:

- Free WI-FI.
- 24/7 Gym Studio.
- 100% smoke-free.
- Opened in 2025.



One King Bed

Two King Beds



## W PUNTA CANA

# PREMIER GUEST ROOM DELUXE SWIM-UP

Elevate your stay with direct access to your private pool in our spacious Premier Deluxe Swim-Up Guestrooms. Ranging from 700 to 850 sq. ft. Each room is designed for maximum comfort and iconic W flair—featuring its own terrace, and plunge-pool access for a truly indulgent experience.

### Room Highlights:

Phone with voicemail.  
Daily Housekeeping.  
Daily Turndown.

### Rooms Features:

- 700–850 sq. ft. (63–77 sqm)
- Swim-up.
- Air-conditioned.
- Accessible Hotel.

### Beds & Bedding

- One King Bed - Max occupancy: 2 guests.
- Two King beds - Max occupancy: 4 guests.
- Rollaway beds not permitted.
- Cribs not permitted.
- Luxury duvet.

### Food & Beverages

- 24-hour room service included.
- Complimentary bottled water & soft drinks.
- Coffee/tea maker.
- MIXBAR with mini fridge.

### Bath & Bathroom

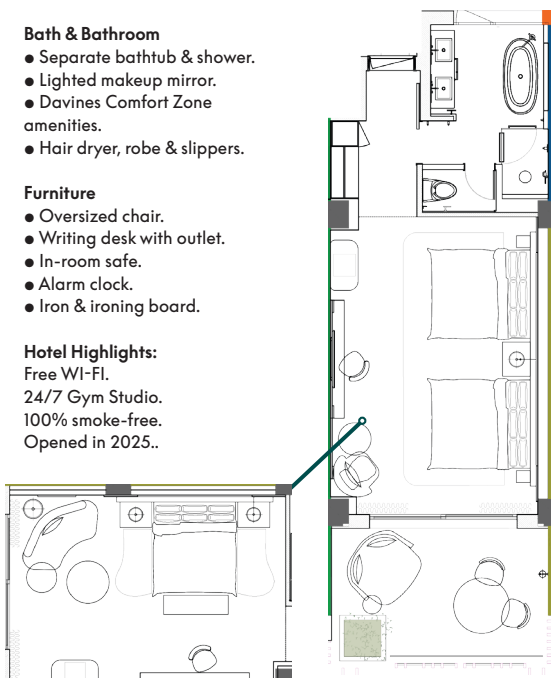
- Separate bathtub & shower.
- Lighted makeup mirror.
- Davines Comfort Zone amenities.
- Hair dryer, robe & slippers.

### Furniture

- Oversized chair.
- Writing desk with outlet.
- In-room safe.
- Alarm clock.
- Iron & ironing board.

### Hotel Highlights:

Free WI-FI.  
24/7 Gym Studio.  
100% smoke-free.  
Opened in 2025.



One King Bed

Two King Beds



## W PUNTA CANA

# PREMIER GUEST ROOM PRIVATE POOL

Elevate your stay with direct access to your private pool in our spacious Deluxe Private Pool rooms. Ranging from 700 to 850 sq. ft. Each room is designed for maximum comfort and iconic W flair—featuring its own terrace, and exclusive private pool access for a truly indulgent experience.

### Room Highlights:

Phone with voicemail.  
Daily Housekeeping.  
Daily Turndown.

### Room Features:

- 700–850 sq. ft. (63–77 sqm)
- Private Pool.
- Air-conditioned.
- Accessible Hotel.

### Beds & Bedding

- One King Bed - Max occupancy: 2 guests.
- Two King beds - Max occupancy: 4 guests.
- Rollaway beds not permitted.
- Cribs not permitted.
- Luxury duvet.

### Food & Beverages

- 24-hour room service included.
- Complimentary bottled water & soft drinks.
- Coffee/tea maker.
- MIXBAR with mini fridge.

### Bath & Bathroom

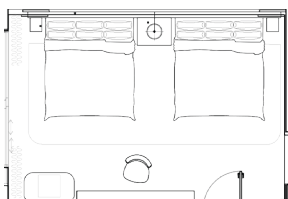
- Separate bathtub & shower.
- Lighted makeup mirror.
- Davines Comfort Zone amenities.
- Hair dryer, robe & slippers.

### Furniture

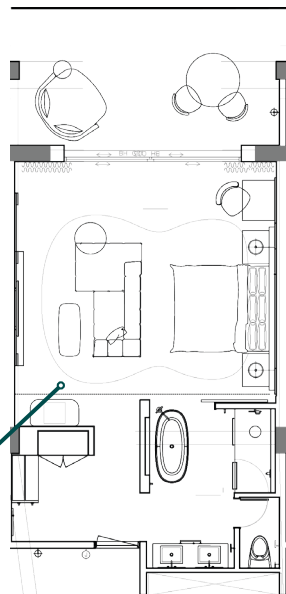
- Oversized chair.
- Living Room Sofa.
- Writing desk with outlet.
- In-room safe.
- Alarm clock.
- Iron & ironing board.

### Hotel Highlights:

Free WI-FI.  
24/7 Gym Studio.  
100% smoke-free.  
Opened in 2025.



Two King Beds



One King Bed



## W PUNTA CANA

# W SUITE TROPICAL VIEW

Your private retreat immersed in lush Caribbean surroundings. Offering between 880 and 1,000 sq. ft. of stylish space, this suite features an expansive layout, luxurious King bed, spa- inspired bathroom, and curated furnishings that reflect the rich textures and energy of Dominican design.

### Room Highlights:

Phone with voicemail.  
Daily Housekeeping.  
Daily Turndown.

### Rooms Features:

- 880–1,000 sq. ft. (79–90 sqm)
- Balcony.
- Air-conditioned.
- Accessible Hotel.

### Beds & Bedding

- One King Bed - Max occupancy: 2 guests.
- Rollaway beds not permitted.
- Cribs not permitted.
- Luxury duvet.

### Food & Beverages

- 24-hour room service included.
- Complimentary bottled water & soft drinks.
- Coffee/tea maker.
- MIXBAR with mini fridge.

### Bath & Bathroom

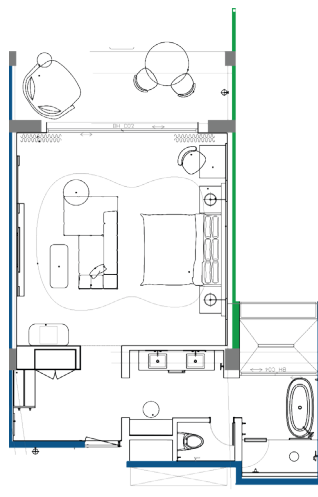
- Separate bathtub & shower.
- Lighted makeup mirror.
- Davines Comfort Zone amenities.
- Hair dryer, robe & slippers.

### Furniture

- Oversized chair.
- Living Room Sofa.
- Writing desk with outlet.
- In-room safe.
- Alarm clock.
- Iron & ironing board.

### Hotel Highlights:

Free WI-FI.  
24/7 Gym Studio.  
100% smoke-free.  
Opened in 2025.





## W PUNTA CANA

# W SUITE SWIM-UP

Make a splash in the most elevated way. Direct access to your own plunge pool for the ultimate in tropical luxury. Spanning 880 to 1,000 sq. ft., this spacious suite features a living/sitting area, bold Dominican-inspired décor, a luxurious spa-style bathroom, and modern tech touches.

### Room Highlights:

Phone with voicemail.  
Daily Housekeeping.  
Daily Turndown.

### Rooms Features:

- 880–1,000 sq. ft. (79–90 sqm)
- Swim-Up.
- Air-conditioned.
- Accessible Hotel.

### Beds & Bedding

- One King Bed - Max occupancy: 2 guests.
- Two King beds - Max occupancy: 4 guests.
- Rollaway beds not permitted.
- Cribs not permitted.
- Luxury duvet.

### Food & Beverages

- 24-hour room service included.
- Complimentary bottled water & soft drinks.
- Coffee/tea maker.
- MIXBAR with mini fridge.

### Bath & Bathroom

- Separate bathtub & shower.
- Lighted makeup mirror.
- Davines Comfort Zone amenities.
- Hair dryer, robe & slippers.

### Furniture

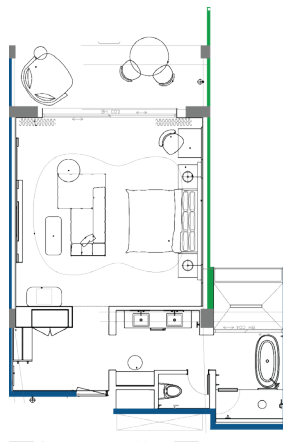
- Oversized chair.
- Living Room Sofa.
- Writing desk with outlet.
- In-room safe.
- Alarm clock.
- Iron & ironing board.

### Accessibility

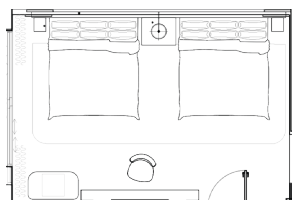
- Mobility accessible rooms available.
- Roll-in shower rooms available.
- Hearing accessible rooms with visual alarms & notification devices available.

### Hotel Highlights:

Free WI-FI.  
24/7 Gym Studio.  
100% smoke-free.  
Opened in 2025.



One King Bed



Double Feature  
Two King Beds



## W PUNTA CANA

# SUPREME SUITE PRIVATE POOL

Discover the pinnacle of luxury in the Supreme Suite with Private Pool. With 1,045 to 1,173 sq. ft. of stylish living space, this suite is designed for guests who crave both sophistication and privacy. Dive into your own private pool, unwind in a sleek lounge area, and immerse yourself in bold Dominican-inspired design paired with W's signature attitude.

### Room Highlights:

Phone with voicemail.  
Daily Housekeeping.  
Daily Turndown.

### Rooms Features:

- 1,045–1,173 sq. ft. (94–106 sqm)
- Private Pool.
- Air-conditioned.
- Accessible Hotel.

### Beds & Bedding

- One King Bed - Max occupancy: 2 guests.
- Two King beds - Max occupancy: 4 guests.
- Rollaway beds not permitted.
- Cribs not permitted.
- Luxury duvet.

### Food & Beverages

- 24-hour room service included
- Complimentary bottled water & soft drinks.
- Coffee/tea maker.
- MIXBAR with mini fridge.

### Bath & Bathroom

- Separate bathtub & shower.
- Lighted makeup mirror.
- Davines Comfort Zone amenities.
- Hair dryer, robe & slippers.

### Furniture

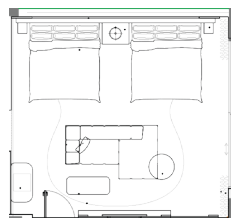
- Oversized chair.
- Living Room Sofa.
- Writing desk with outlet.
- In-room safe.
- Alarm clock.
- Iron & ironing board.

### Accessibility

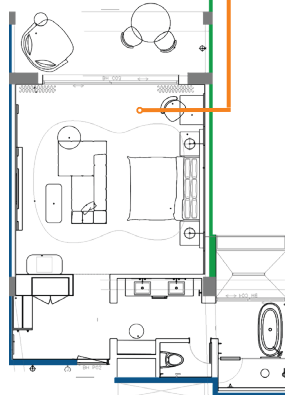
- Mobility accessible rooms available.
- Roll-in shower rooms available.
- Hearing accessible rooms with visual alarms & notification devices available.

### Hotel Highlights:

Free WI-FI.  
24/7 Gym Studio.  
100% smoke-free.  
Opened in 2025.



Double Feature  
Two King Beds



One King Bed



## W PUNTA CANA

# SUPREME SUITE OCEAN VIEW

Your spacious retreat looking to the Atlantic Ocean. Offering between 1,045 and 1,073 sq. ft. of stylish space, this suite features an expansive layout, luxurious King bed, spa-inspired bathroom, this suite features an expansive layout, luxurious King bed, spa-inspired bathroom, of Dominican design.

### Room Highlights:

Phone with voicemail.  
Daily Housekeeping.  
Daily Turndown.

### Rooms Features:

- 1,045–1,173 sq. ft. (94–106 sqm)
- Balcony.
- Air-conditioned.
- Accessible Hotel.

### Beds & Bedding

- One King Bed - Max occupancy: 2 guests.
- Rollaway beds not permitted.
- Cribs not permitted.
- Luxury duvet.

### Food & Beverages

- 24-hour room service included.
- Complimentary bottled water & soft drinks.
- Coffee/tea maker.
- MIXBAR with mini fridge.

### Bath & Bathroom

- Separate bathtub & shower.
- Lighted makeup mirror.

- Davines Comfort Zone amenities.
- Hair dryer, robe & slippers

### Furniture:

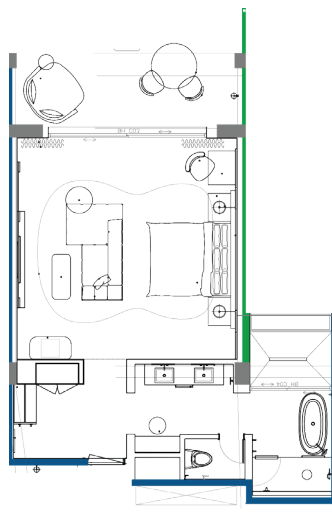
- Oversized chair.
- Living Room Sofa.
- Writing desk with outlet.
- In-room safe.
- Alarm clock.
- Iron & ironing board.

### Accessibility

- Mobility accessible rooms available.
- Roll-in shower rooms available
- Hearing accessible rooms with visual alarms & notification devices available.

### Hotel Highlights:

- Free WI-FI.
- 24/7 Gym Studio.
- 100% smoke-free.
- Opened in 2025.





## W PUNTA CANA

# OASIS SUITE

Welcome to the ultimate escape, a private villa style suite offering 2,530 to 3,228 sq. ft. of impeccably designed space across two bedrooms, a spacious living area, and a private pool. With curated amenities, and Personal Insider service (butler), this suite is made for guests who demand the extraordinary. Whether for family, friends, or an indulgent couple's getaway, the Oasis Suite delivers on every level.

### Room Highlights:

Phone with voicemail.  
Daily Housekeeping.  
Daily Turndown.

### Rooms Features:

- 2,530–3,228 sq. ft. (228–291 sqm)
- Private Pool & Terrace.
- Separate Sitting Area.
- A/C - Accessible Hotel

### Beds & Bedding

- Two-bedroom Villa Style Suite.
- Two Guestroom with One King-size bed each – Max occupancy: 4 guests.
- Rollaway beds not permitted.
- Cribs not permitted.
- Luxury duvet.

### Food & Beverages

- 24-hour room service included.
- Complimentary bottled water & soft drinks.
- Coffee/tea maker.
- MIXBAR with mini fridge.

### Bath & Bathroom

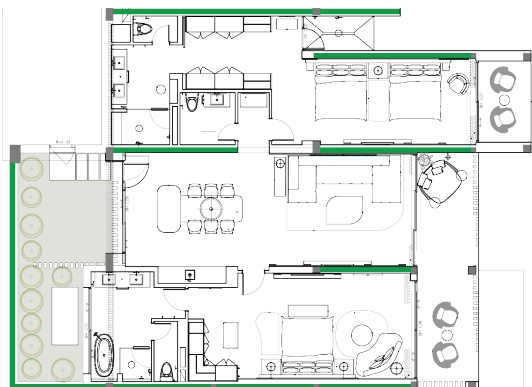
- Separate bathtub & shower.
- Lighted makeup mirror.
- Davines Comfort Zone amenities.
- Hair dryer, robe & slippers.

### Furniture

- Fully Furbished Living Room.
- Oversized chair.
- Writing desk with outlet.
- In-room safe.
- Alarm clock .
- Iron & ironing board.

### Hotel Highlights:

Free Wi-Fi.  
24/7 Gym Studio.  
100% smoke-free.  
Opened in 2025.





## W PUNTA CANA

# OASIS MEGA SUITE

Welcome to the ultimate escape, a private villa-style suite offering 2,530 to 3,228 sq. ft. of impeccably designed space across two bedrooms, a spacious living area, and a private pool. With curated amenities and Personal Insider service (butler), this suite is made for guests who demand the extraordinary. Whether for family, friends, or an indulgent couple's getaway, the Oasis Suite delivers on every level.

### Room Highlights:

Phone with voicemail.  
Daily Housekeeping.  
Daily Turndown.

### Rooms Features:

- 3,130–3,626 sq. ft. (282–326 sqm)
- Private Pool & Terrace.
- Separate Sitting Area.
- A/C - Accessible Hotel.

### Beds & Bedding

- Two-bedroom Villa Style Suite.
- King-size bed Guestroom plus. One Two King-size beds Guestroom – Max occupancy: 6 guests.
- Rollaway beds not permitted.
- Cribs not permitted.
- Luxury duvet.

### Food & Beverages

- 24-hour room service included.
- Complimentary bottled water & soft drinks.
- Coffee/tea maker.
- MIXBAR with mini fridge.

### Bath & Bathroom

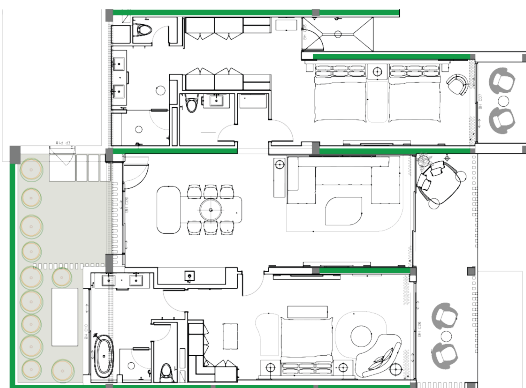
- Two Separate bathtub & shower.
- Lighted makeup mirror.
- Davines Comfort Zone amenities.
- Hair dryer, robe & slippers.

### Furniture

- Fully Furbished Living Room.
- Oversized chair.
- Writing desk with outlet.
- In-room safe.
- Alarm clock.
- Iron & ironing board.

### Hotel Highlights:

Free WI-FI.  
24/7 Gym Studio.  
100% smoke-free.  
Opened in 2025.





## W PUNTA CANA

# LARIMAR PENTHOUSE

Experience unparalleled luxury and space in the Larimar Penthouse —our grandest residence spanning 4,681 sq. ft.

This exceptional suite offers three bedrooms, multiple living and dining areas, a private pool, and a separate kitchen, making it perfect for families, groups, or those who desire ultimate privacy and comfort.

Personal Insider (butler service) included. The Larimar is a lavish retreat like no other.

### Room Highlights:

Phone with voicemail.  
Daily Housekeeping.  
Daily Turndown.

### Rooms Features:

- 4,681 sq. ft. (421 sqm)
- Private Pool & Terrace
- Separate Sitting Area
- A/C - Accessible Hotel

### Beds & Bedding

- Three-bedroom Penthouse each featuring a private bathroom plus 1.5 guest bathroom.
- Two Guestrooms with One King-size bed plus One. 2 King-size beds Guestroom – Max occupancy: 8 guests
- Rollaway beds not permitted
- Cribs not permitted
- Luxury duvet

### Food & Beverages

- 24-hour room service included
- Complimentary bottled water & soft drinks
- Coffee/tea maker
- MIXBAR with mini fridge

### Bath & Bathroom

- Two Separate bathtub & shower
- Lighted makeup mirror
- Davines Comfort Zone amenities
- Hair dryer, robe & slippers

### Furniture

- Fully Furbished Living Room
- Oversized chair
- Writing desk with outlet
- In-room safe
- Alarm clock
- Iron & ironing board

### Hotel Highlights:

Free WI-FI.  
24/7 Gym Studio.  
100% smoke-free.  
Opened in 2025.

